



Security Direct
property protection

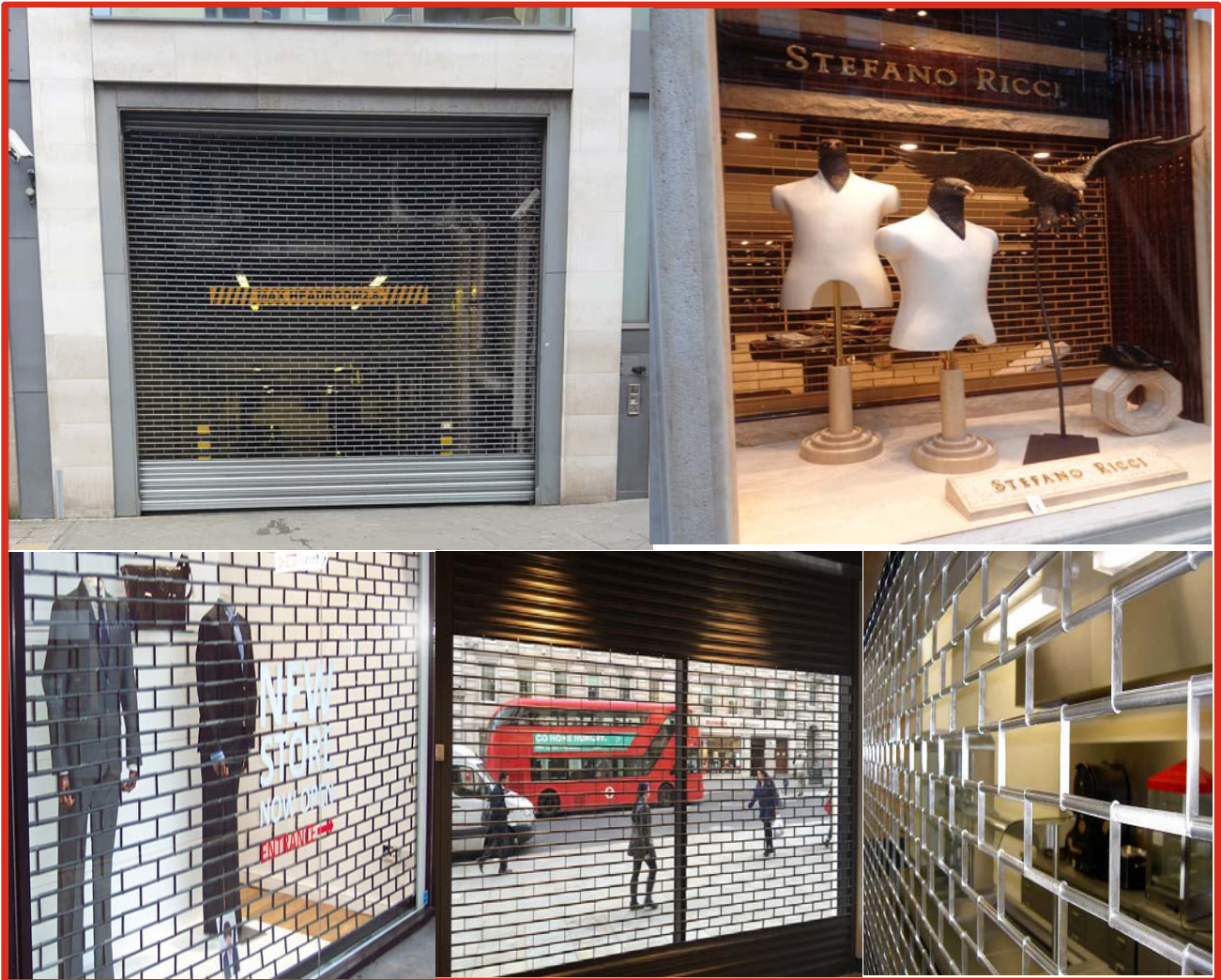
Large Product Range ✓
Competitive Prices ✓
25 years Experience ✓

Tube & Link Roller Shutter



SECURITY DIRECT
www.securitydirectuk.com

Tube and Link



Key Benefits

- Retail and Car Parks
- Low to Medium Security
- 80% Vision
- Steel Box and Guides
- Aluminium Tube and Links
- Tube or Outboard Motor available
- Mill Finish as standard. Powder Coating available.
- 3 week lead time (Subject to change)



Product Overview

Description

A popular roller grille shutter as it provides 80% Vision.

Common use

Internal Shop Fronts

Maximum Width

6000mm

Maximum Height

4500mm

Weight

19kgs m/2

Standard Finish

Mill Finish as standard. Galvanised, Anodised Silver or Powder coated at an extra cost.

Lead Time

15 working days (subject to change)

20-25 working days for Powder Coating

Specification

GRILLE LATTICE

Brick formation as standard, utilising 13mm diameter tubes enclosing 8mm steel rods. Vertical lattice links create 56mm high openings (lower or higher available on request), enabling 75% transparency.

Finish: Anodised aluminium, mill finish or powder coated.

Weight per m²: 9kg

Maximum Width: 12000mm

Maximum Area: 20m² (tubular motor)
72m² (outboard motor)



Specification

CASING

Galvanised steel casing and end plates.

Finish: Galvanised, or powder coated to match powder coated grille.

Guide Height (mm) Plate Size (mm)

Motor

1850 250 Tubular

2700 300 Tubular

4150 360 Tubular

2659 305 Tubular

4145 355 Tubular

5200 400 Tubular / Outboard

6000 450 Outboard

Plate sizes shown as a guide only and may vary.

BOTTOM RAIL

Galvanised steel guide channels. Steel 'L' or 'T' shaped bottom rail.

GUIDE CHANNELS

Galvanised steel guide channels. Guide channel width will vary dependent on application, either 50mm, 65mm, 75mm or 100mm. Windlocking guides and slat-ends available.

Finish: Galvanised, or powder coated to match powder coated grille.

Guide channels are bolted onto angle or box section, depending on the application.

OPERATION

Electric, Tubular Motor: Tubular motor with internal rocker or external key switch as standard & safety brake as appropriate to comply with legislation. Manual override facility & crank handle as required (surcharge applies).

Outboard Motor: Three phase motor with safety brake, chain manual override & TS959 push button control station as standard.

Both tubular & outboard motors have numerous control option variants such as group, remote or mobile phone activation.

CE Compliant to all applicable directives and regulations.

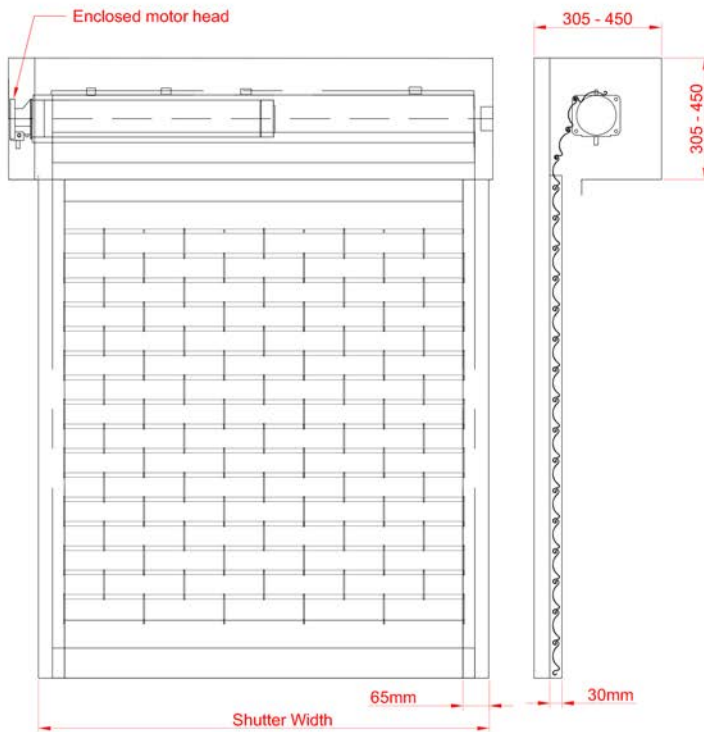
www.securitydirectuk.com

Tube & Link

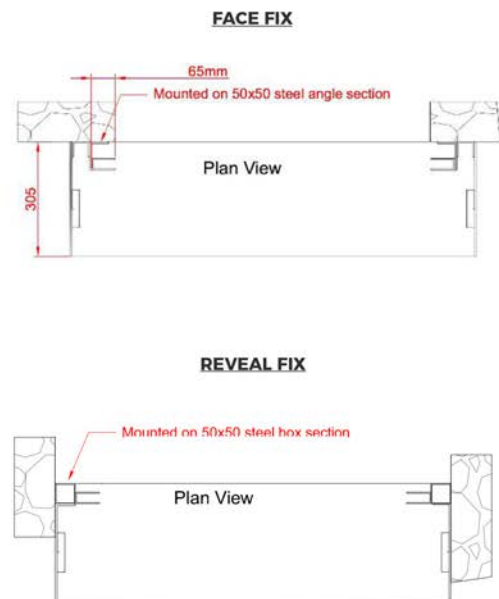


Specification

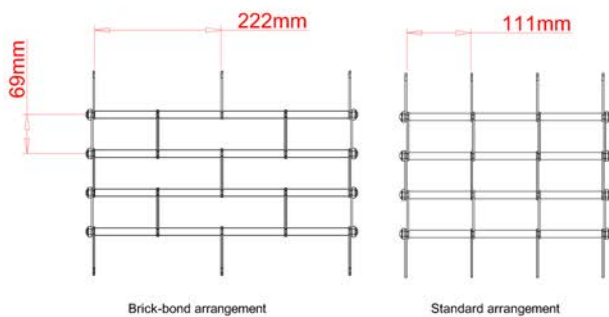
FRONT FACE



FIXING DETAIL



SLAT PROFILE



GUIDE CHANNELS

