



**Security Direct**  
property protection

Free Advice   
Free Quote   
Nationwide

# *Shop Front Buying Guide*



**SECURITY DIRECT**  
[www.securitydirect.uk.com](http://www.securitydirect.uk.com)

# Shop Front Roller Shutter Buying Guide

We have a very large range of Roller Shutters, all of which have many different configurations. This Security Direct Buyer's Guide is designed to help you understand ALL the options available, and with our help, select the right Shutter for your particular application.

## WHAT IS THE ROLLER SHUTTER NEEDED FOR?

Roller Shutters can be fitted over many types of openings, not just doors and windows. The reason why roller shutters are installed can be 1) to provide just a Visual Barrier, 2) for Security of Property. Depending on the type of opening and the reason why the Roller Shutter is being fitted will help narrow down the type of Roller Shutter required.

## EXAMPLES:-

**VISUAL BARRIER** - This could be just to protect the Shop front from vandalism or to deter people from smash and grab breakins. Usually the Roller Shutter is fitted externally.

**SECURITY** - When the priority is Security then it is usually more secure if you can fit the Roller Shutter Internally, although this does not prevent people breaking the glass.

## Do you fit the Roller Shutter internally or externally?

Roller Shutters can be fitted internally or externally. Below are some points to bear in mind when selecting fitting the Shutters inside or outside.

	Pro's	Con's
<b>Fitting Internally</b>	Higher Security No Planning required Shutter Boxes can be hidden above ceiling	Doesn't protect the Glass from vandalism
<b>Fitting Externally</b>	Protects the shop front from Vandalism	More vulnerable to attack Usually Planning Permission is required

## Do I need Planning Permission?

If the Roller Shutter is fitted externally then we would highly recommend that you speak to your Local Planning Department. Officially you DO need planning but some planning areas are more lenient than others. We have known recently Planning Departments making people take down new and old shutters which don't having planning approval. We understand that its irrelevant even if you are replacing existing Roller Shutters.

### Planning Specification for Roller Shutters

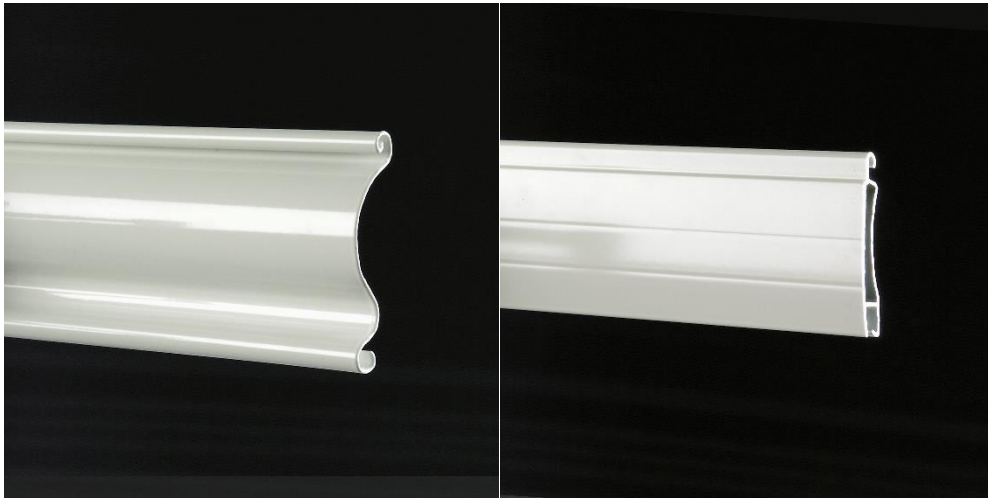
Normally the Planning Departments require the Roller Shutters to have;

**Punched & Perforated Laths** - Normally Planners require all or part of the Shop shutter curtain to have punched laths – although Perforated are sometimes allowed – because Solid traditional Galvanised Steel Shutters can make areas look an eyesore and run down. The Punched Shutter looks more attractive, does not look as stark as a solid shutter and allows potential customers to view products inside the Shop 24 hours a day. See through Shutters also allow the Police and Fire Brigade to see through the shutter into the premises when the shutter is closed.

**Powder Coated** - Usually they also require that the Roller Shutter is powder coated to compliment the Shop Front. Again they don't want the traditional steel finish as its looks industrial and an eye sore on the high street.

## **WHAT MATERIAL ARE THE ROLLER SHUTTERS MANUFACTURED FROM?**

The majority of Roller shutters are manufactured from either Steel or Aluminium. Most people think that Steel is the strongest, but this is not necessarily the case when it comes to Roller Shutters. Steel Laths are usually Single Skin, where Aluminium Laths are usually Extruded and have a Twin Wall, hence are stronger.



**SINGLE SKIN STEEL LATH**

**TWIN WALLED ALUMINIUM LATH**

### **Advantages of Aluminium Shutters:**

- 1) The Guides and Laths are made from an Extrusion process allowing us to build in reinforcements to strengthen those important parts. With Steel Shutters we make the Guides and Laths from flat steel plate and then bend it into shape, hence it is not too difficult to bend it back to break through the shutter. Hence Aluminium is usually more secure than Steel.
- 2) Insurance Approved for external use whereas we can only get Steel Shutters Insurance Approved for Internal use.
- 3) Our RA2 & RA4 Aluminium Shutters roll up into a smaller box - 205 mm square, compared to Steel which rolls up into a 300 mm square box. Ideal where there is limited headroom.
- 4) Aluminium does not rust and so provides better weather and corrosion resistance, so retains its appearance better throughout its life.

5) Powder Coating keys very well onto Aluminium, providing a long lasting finish. Powder Coating onto Galvanised Steel on the other hand does not provide a very good key, hence does deteriorate over time as can be witnessed on many Shop Fronts who tend to go for Steel Shutters being the cheapest option.

6) Aluminium is the preferred solution for Coastal areas because Steel will corrode

7) Aluminium is much quieter and smoother in operation whereas Steel tends to provide more of a “Clanking” sound.

### **Advantages of Steel Shutters:**

1) Usually the lowest cost option

2) Aluminium will only go up to 6 metres wide and 5 metres high, whereas Steel is available for sizes up to 7 metres wide and 7 metres high.

### **TYPES OF CURTAIN AVAILABLE**

There are basically THREE types of Curtain Lath available. On some shutters we can mix TWO types of Lath together in the same shutter curtain e.g some Punched Laths at eye level for Vision with the remainder of the curtain Solid Laths.

1) Solid Laths

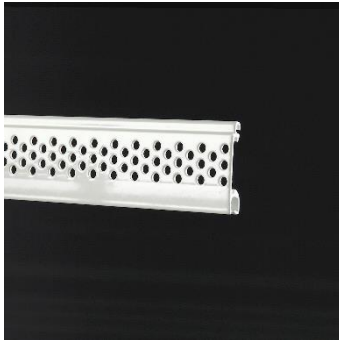
2) Perforated Laths

3) Punched Laths

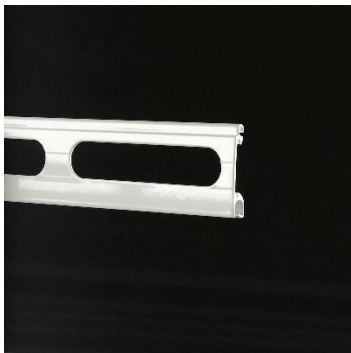
**SOLID LATHS** - Solid Laths are solid, you can't see through them and are usually the cheapest type of Lath. Solid Laths are also stronger than the vision laths.



**PERFORATED LATHS** - These are small holes that are punched into the Laths. They give usually around 15 % Vision.



**PUNCHED LATHS** - These are best described as Grille Type, Slotted or Letterbox Cut Outs. Depending on which type of Lath, provides between 44 and 69% Vision. On some of these laths you can get your hands through, so the option of either smaller spacing or polycarbonate inserts are also available.



## **TYPES OF GUIDE RAIL AVAILABLE**

- 1) Standard Fixed – for Normal Security applications
- 2) Heavy Duty Fixed – for High Security applications - as little as £27 + VAT per Shutter. Available on our RA2 & RA4 Shutters – wind end locks will be fitted to the curtain as standard

## **WHAT TYPE OF OPERATION?**

There are Two Type of Operation, Manual Operation and Electric Operation. When trying to decide, ask the following Health and Safety questions;

- **Who is going to be operating the Shutter?**
- **What are their Physical abilities?**
- **Can you operate the Shutter without leaning across anything?**

## **MANUAL OPERATION**

**Spring & Lock** - This is the most popular type of Manual Operation, you simply Lift Up and Pull Down the Shutter. It is locked using a Lock in the Bottom Lath, you turn the key and a Bolts Shoot out into the guide rails at each side.

## **ELECTRIC OPERATION**

This involves a Motor that powers the Roller Shutter. On Domestic and Commercial Shutters' we use a Tubular Motor that fits inside the barrel at one end and works off normal 240 Volt single phase electrical supply. We use Top Quality motors that come with a 5 year's parts Warranty. There are cheap Chinese motors on the market but as a company, we never use these.

We would normally recommend any shutter that is over 2000mm Wide and 2100mm High to be Electric Operation. We can supply Manually Operated Shutters bigger than this if required. The reason we recommend Electric operation is to comply with the Health and Safety Executive "Safe Lifting Loads". When deciding on the operation, we suggest you think who is going to be operating the shutter and whether or not they have to stretch across to operate the shutter.

Electrically Operated Shutters are not much more expensive than Manual Operation. On normal shutters it can be as little as £100 difference. What makes Electric operation expensive is when you introduce sophisticated control systems i.e; Remote Control and Battery Backups

## **CONTROLS FOR ELECTRIC SHUTTERS**

We have a range of Controls for Single and 3 Phase Roller Shutters, to suit most requirements. A Toggle Switch is provided as standard to operate the Shutter. However, for an extra cost, other Shutter controls can be provided, which include;

Basic Key Switch – from £30 + VAT

Remote Control Operation – from £138 + VAT

Smart Phone Operation - POA

Access Control Integration - POA

Automatic Open and Close Devices – POA

## HOW TO OPERATE IN THE EVENT OF A POWER FAILURE

Sometime you may get a power failure and still need to open or secure the roller shutter. If this is the case then you need to consider a Manual Override. We have Two types of Manual Overrides;

**Winding Handle** - A separate winding handle with a Hex Bar attachment is slotted into the motor end of the shutter box and connects into the motor drive. You then simply wind the shutter open or closed. This can be a fiddly, depending on where the hole for the override is located and if you have the winding handle available. Also winding the handle can be a slow process. However, for the very occasional time that it may be required, could save a lot of time, cost and aggravation. So well worth paying the extra £45 + VAT but also specify a Manual Override Lock at an extra £24 + VAT to prevent other people being able to override your Shutter.

**Battery Backup Unit** - This is a Large Battery than is constantly plugged into the power source. The shutter is then wired through the Battery Backup. If the Power fails, the shutter draws its power from the Battery. The batteries are only designed to give 5-8 operating cycles. These are a more expensive options ranging from £200 - £600 + VAT depending on the size of the shutter.

## WHAT FINISHES ARE AVAILABLE?

Industrial Steel Shutters come in a Galvanised finish only as standard whereas Commercial Steel Shutters, as standard, can be either Powder Coated one of our FIVE Standard Colours OR left in Galvanised finish.

Aluminium Roller Shutters are Powder Coated as standard in one of our FIVE Standard Colours. We cannot supply the shutters in the natural mill finish.

On top of the FIVE Standard Colours, we have an additional range of SIXTY SEVEN colours in stock. Our quotations detail the extra costs for each of these colours. The full range of colours can be seen on our website. If we don't have the colour in stock, then we can buy it in especially at an extra cost.