

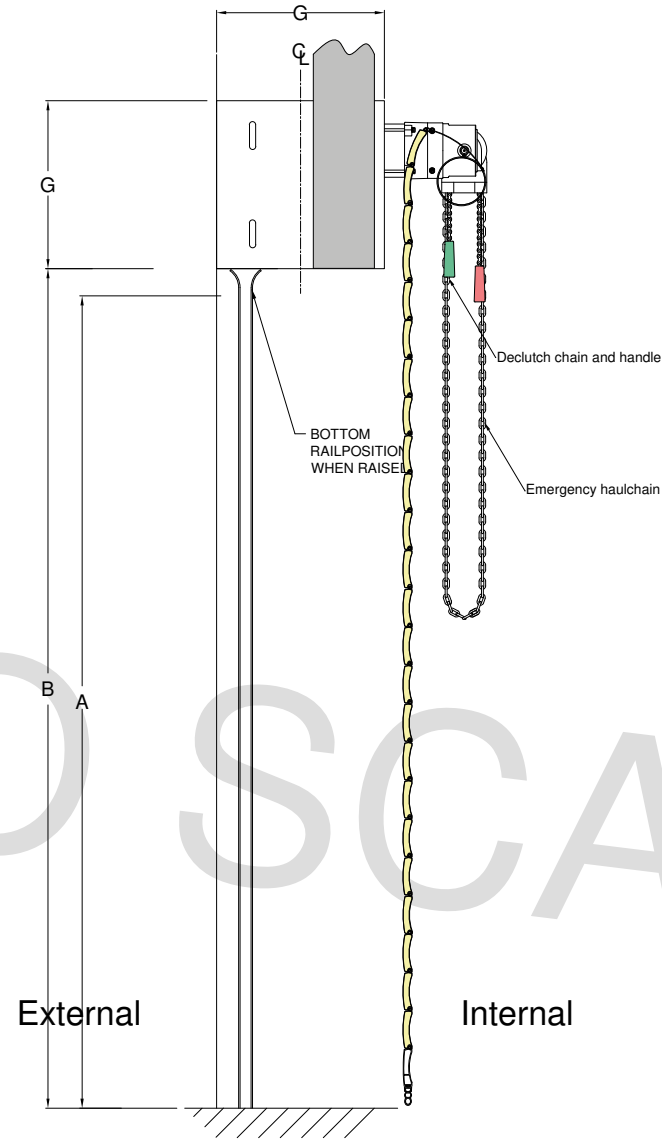
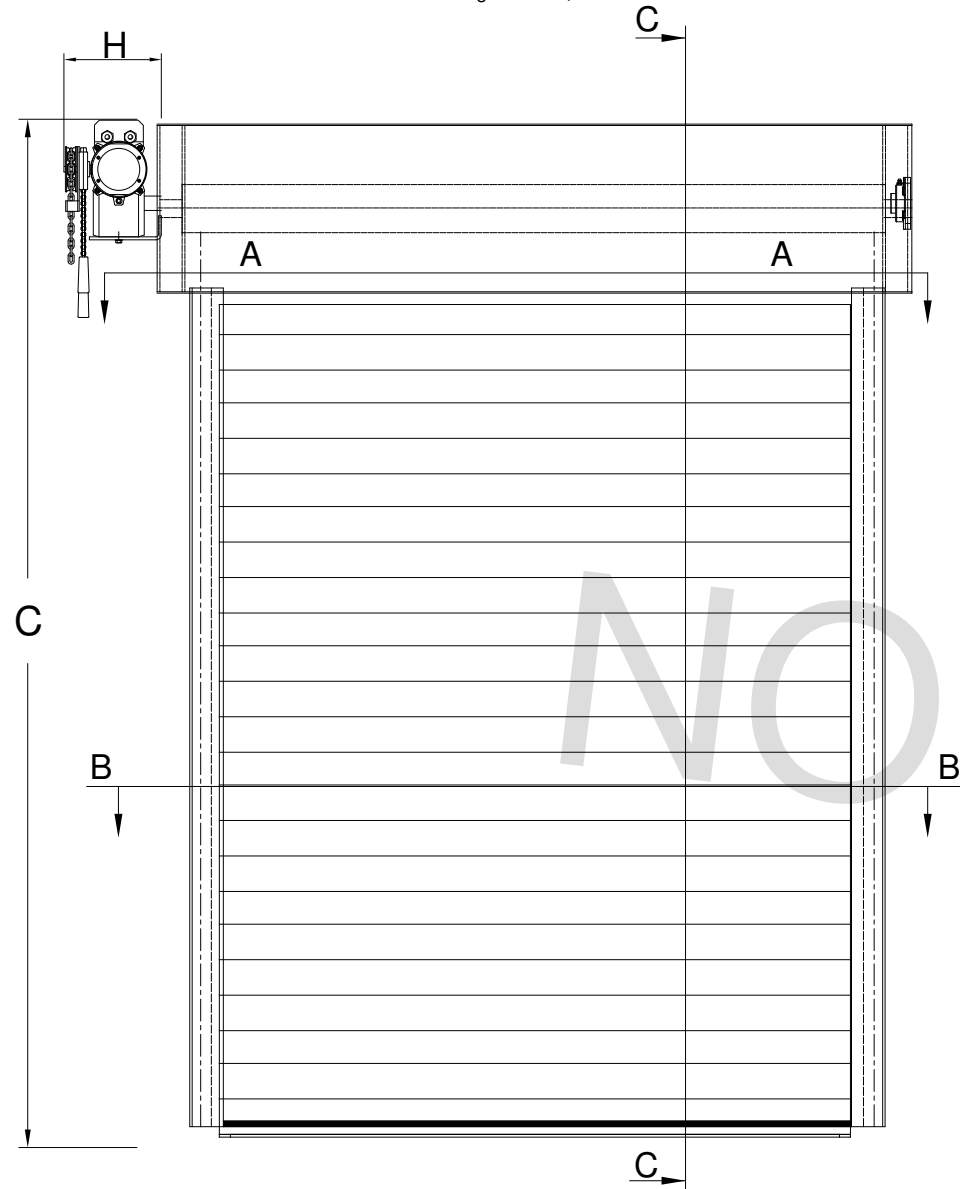
# STANDARD DRAWING - 77MM SLAT

ALL DIMENSIONS IN mm  
UNLESS OTHERWISE STATED  
GENERAL TOLERANCES:  
LINEAR +/- 3  
ANGULAR +/- 1

FIRST ANGLE PROJECTION

A3 TITLEBLOCK  
EXTERNAL SIZE 410mm x 290mm

Front elevation coil side  
For lath and guide size, see details.



Dimension	Description	Size (mm)
A	Clear opening height	4000
B	Height to underside of endplate	4080
C	Overall product height	4480
D	Clear opening width	4000
E	Back of guide width	4190
G	Box size	400
J	Lower lath solid section	N/A
K	Vision section	N/A
L	Slope offset	N/A

### Specification

#### Drive

GfA SI 17.15 - GA17/15GD Safedrive© 3 Phase Motor - Standard  
Safety brake not required with this configuration.

**Override:** Chain operation

**Power Requirements:** 3 x 230/400 50HZ, **IP Rating:** IP65, **Amperage:** 4,3 / 2,5A, **RPM:** 15, **Opening/closing time:** 1 seconds

#### Shutter application

Door

#### Fitting

Internal

#### Guide channel

UPH250

#### Bottom rail

Extruded aluminium with rubber seal

#### Control

TS959 (3 Phase) Controller

#### Curtain lath

Solid Insulated Lath (77)

#### Canopy

**EndPlateSleeve:** No endplate sleeve

**Fascia:** No fascia

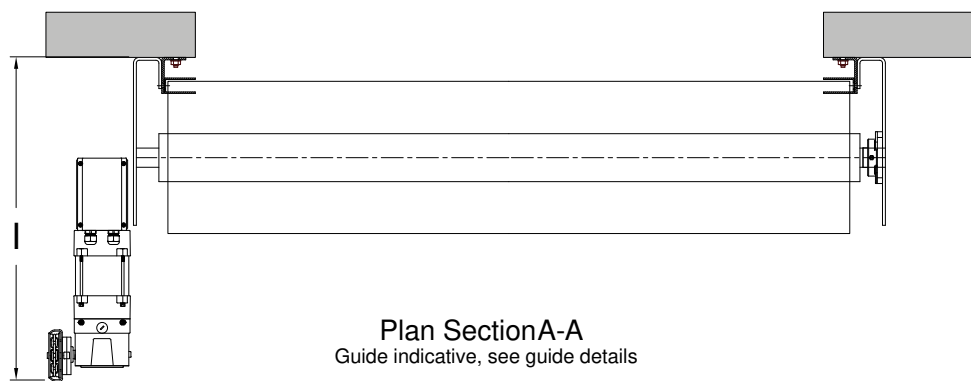
**Hood:** No hood

**MotorCover:** No motor cover

#### Colour

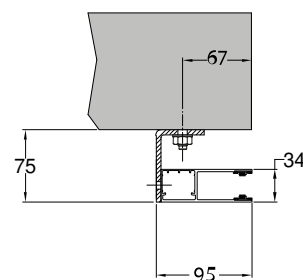
GALV: Plain Galvanised Finish (GALV) – Self Finished

Section C-C



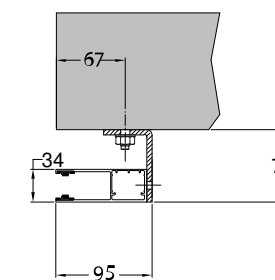
Plan Section A-A  
Guide indicative, see guide details

Left guide detail

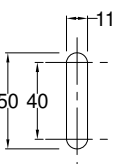


Face fixing (Inset angle)

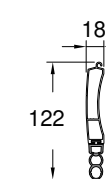
Right guide detail



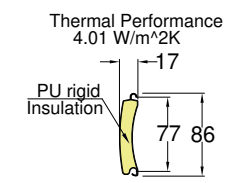
Face fixing (Inset angle)



Fixing slot details



Bottom Slat



Lath Section

Thermal Performance  
4.01 W/m²K

PU rigid  
Insulation



THIS DRAWING IS THE PROPERTY OF SECURITY DIRECT

Please note that these drawings and information may not contain the full details required for installation and thus to be used in conjunction with installation instructions. SWS UK reserves the right to modify the design and change specifications without notice.

TITLE: Industrial Shutter General Arrangement

SCALE: N.T.S DRAWN BY: RH

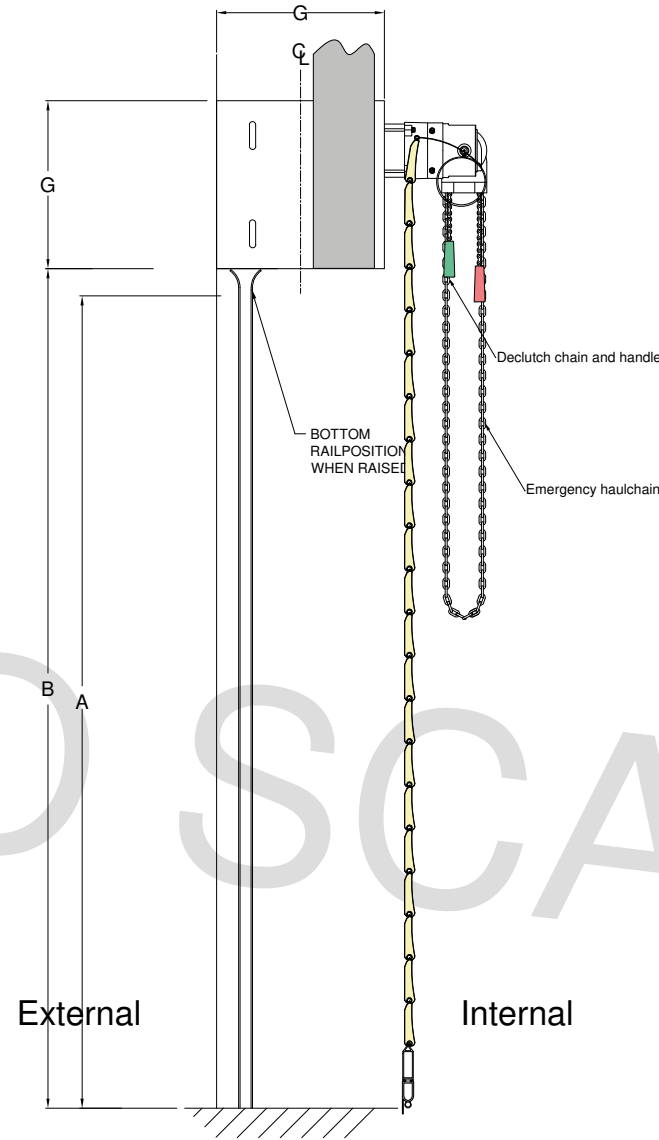
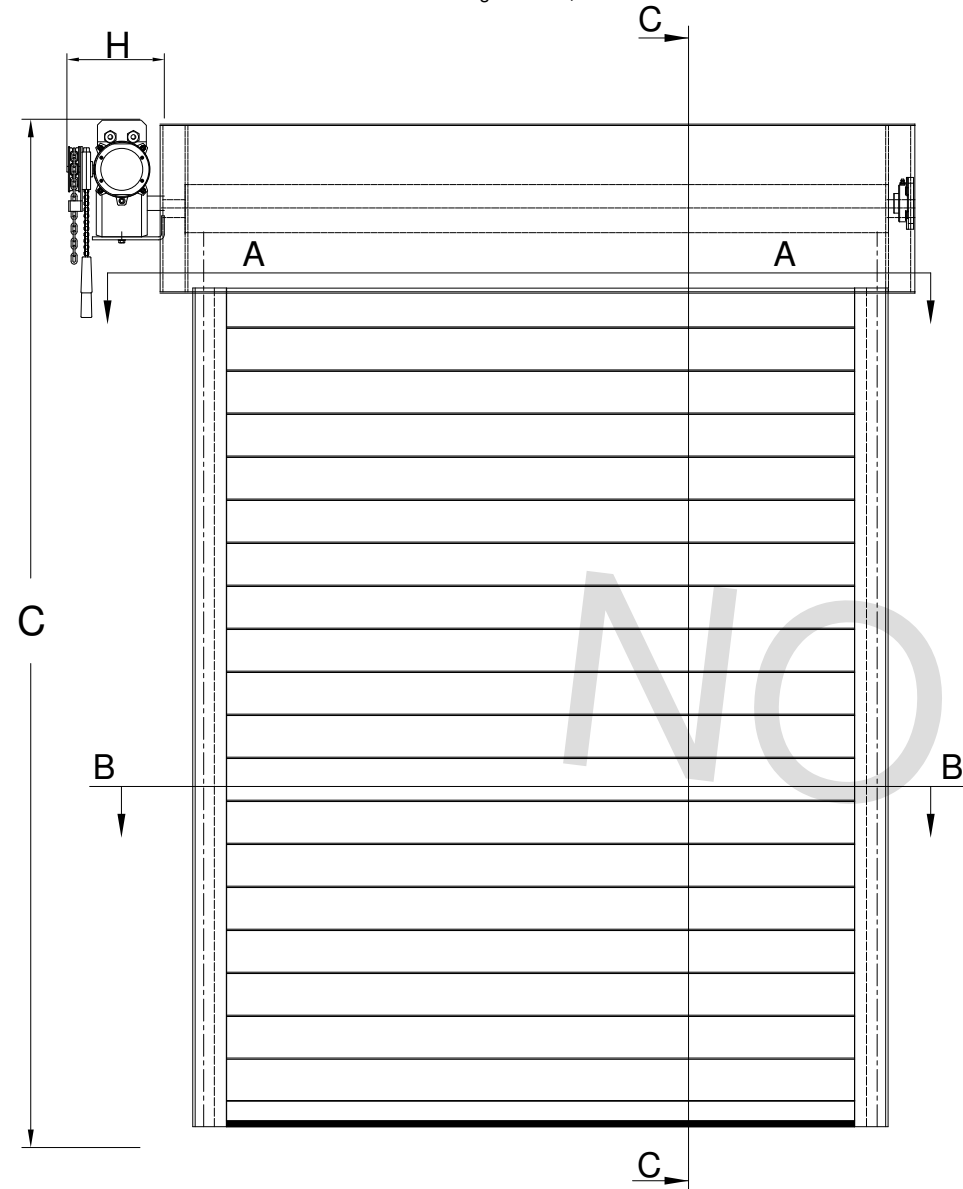
# STANDARD DRAWING - 95MM SLAT

ALL DIMENSIONS IN mm  
UNLESS OTHERWISE STATED  
GENERAL TOLERANCES:  
LINEAR +/- 3  
ANGULAR +/- 1

FIRST ANGLE PROJECTION

A3 TITLEBLOCK  
EXTERNAL SIZE 410mm x 290mm

Front elevation coil side  
For lath and guide size, see details.



Dimension	Description	Size (mm)
A	Clear opening height	4000
B	Height to underside of endplate	4100
C	Overall product height	4550
D	Clear opening width	4000
E	Back of guide width	4170
G	Box size	450
J	Lower lath solid section	N/A
K	Vision section	N/A
L	Slope offset	N/A

### Specification

#### Drive

GfA SI 35.15 - GA35/15GD Safedrive© 3 Phase Motor - Standard  
Safety brake not required with this configuration.

#### Override: Chain operation

**Power Requirements:** 3 x 230/400 50HZ, **IP Rating:** IP65, **Amperage:** 4,4 / 2,6A, **RPM:** 15, **Opening/closing time:** 1 seconds

#### Shutter application

Door

#### Fitting

Internal

#### Guide channel

80WM Standard

#### Bottom rail

Extruded aluminium with rubber seal

#### Control

TS959 (3 Phase) Controller

#### Curtain lath

Solid Insulated Lath (Y195)

#### Canopy

EndPlateSleeve: No endplate sleeve

Fascia: No fascia

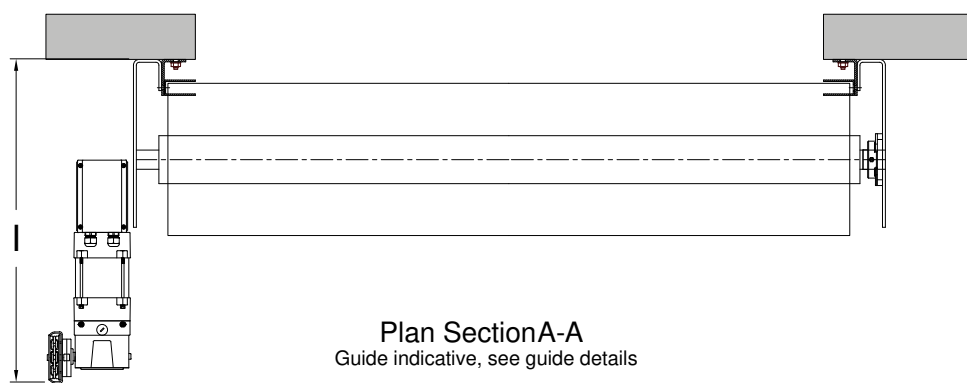
Hood: No hood

MotorCover: No motor cover

#### Colour

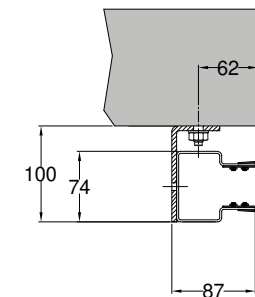
GALV: Plain Galvanised Finish (GALV) – Self Finished

Section C-C



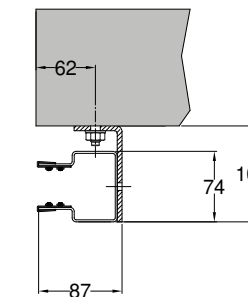
Plan Section A-A  
Guide indicative, see guide details

Left guide detail

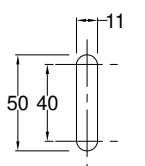


Face fixing (Inset angle)

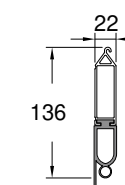
Right guide detail



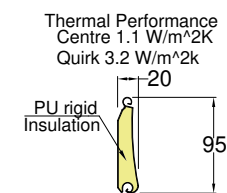
Face fixing (Inset angle)



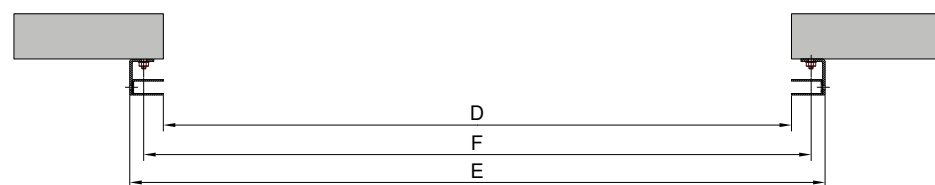
Fixing slot details



Bottom Slat



Lath Section



Plan Section B-B



THIS DRAWING IS THE PROPERTY OF SECURITY DIRECT

Please note that these drawings and information may not contain the full details required for installation and thus to be use in conjunction with installation instructions. SWS UK reserves the right to modify the design and change specifications without notice.

TITLE: Industrial Shutter General Arrangement

SCALE: N.T.S DRAWN BY: RH

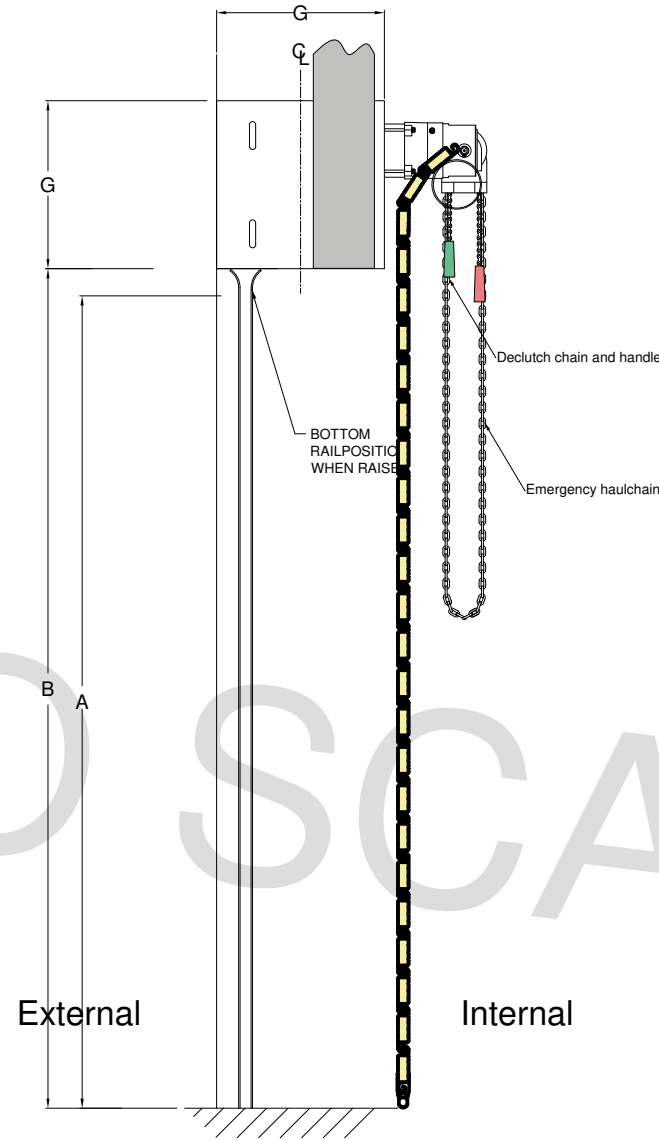
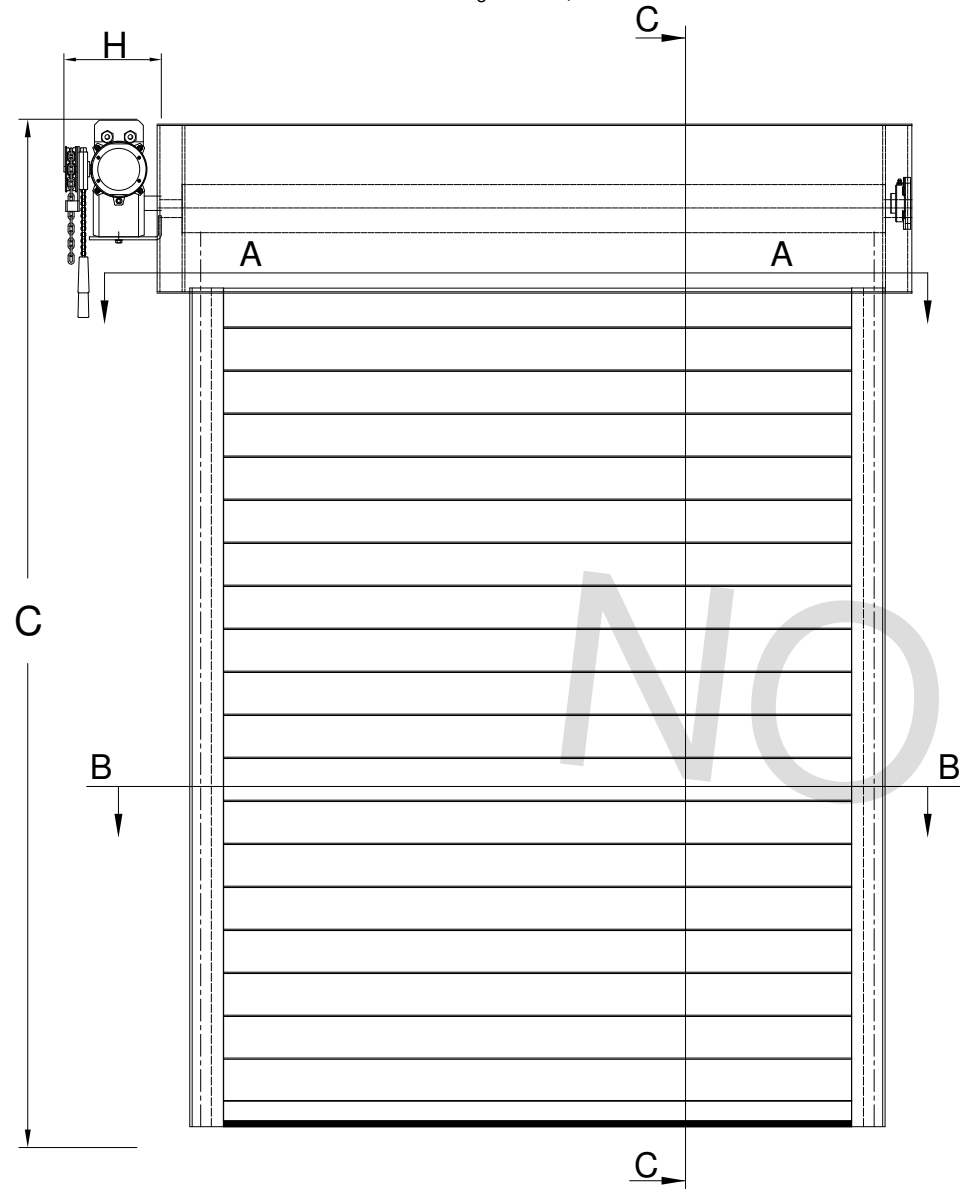
# STANDARD DRAWING - 100MM SLAT

ALL DIMENSIONS IN mm  
UNLESS OTHERWISE STATED  
GENERAL TOLERANCES:  
LINEAR +/- 3  
ANGULAR +/- 1

FIRST ANGLE PROJECTION

A3 TITLEBLOCK  
EXTERNAL SIZE 410mm x 290mm

Front elevation coil side  
For lath and guide size, see details.



Dimension	Description	Size (mm)
A	Clear opening height	4000
B	Height to underside of endplate	4100
C	Overall product height	4550
D	Clear opening width	4000
E	Back of guide width	4170
G	Box size	450
J	Lower lath solid section	N/A
K	Vision section	N/A
L	Slope offset	N/A

### Specification

#### Drive

GfA SI 35.15 - GA35/15GD Safedrive© 3 Phase Motor - Standard  
Safety brake not required with this configuration.

**Override:** Chain operation

**Power Requirements:** 3 x 230/400 50HZ, **IP Rating:** IP65, **Amperage:** 4,4 / 2,6A, **RPM:** 15, **Opening/closing time:** 1 seconds

#### Shutter application

Door

#### Guide channel

80DB Standard

#### Control

TS959 (3 Phase) Controller

#### Canopy

**EndPlateSleeve:** No endplate sleeve

**Fascia:** No fascia

**Hood:** No hood

**MotorCover:** No motor cover

#### Colour

GALV: Plain Galvanised Finish (GALV) – Self Finished

#### Fitting

Internal

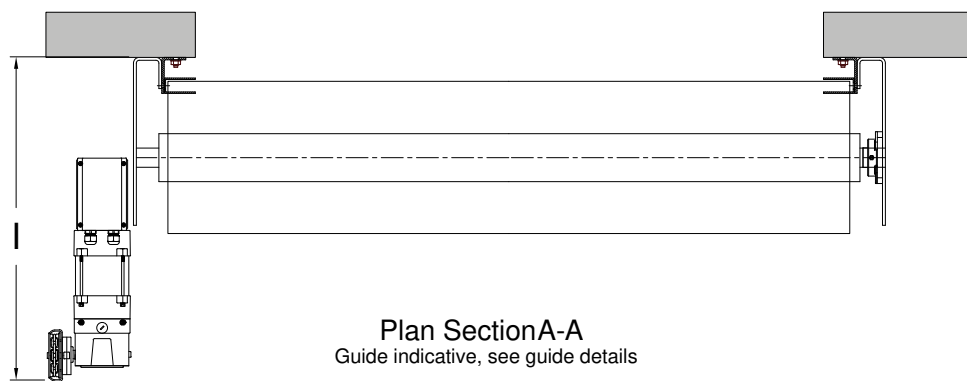
#### Bottom rail

Carrier with rubber seal

#### Curtain lath

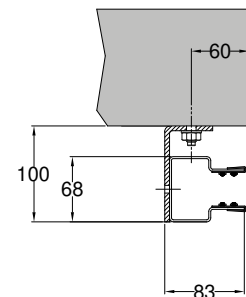
Solid Insulated Lath (100)

Section C-C



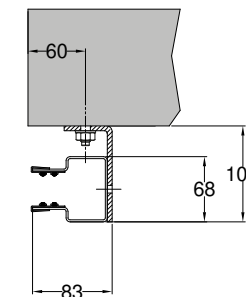
Plan Section A-A  
Guide indicative, see guide details

Left guide detail

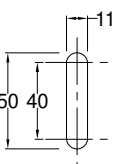


Face fixing (Inset angle)

Right guide detail

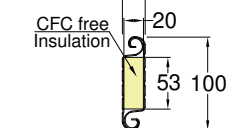


Face fixing (Inset angle)

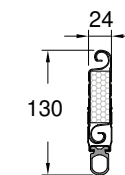


Fixing slot details

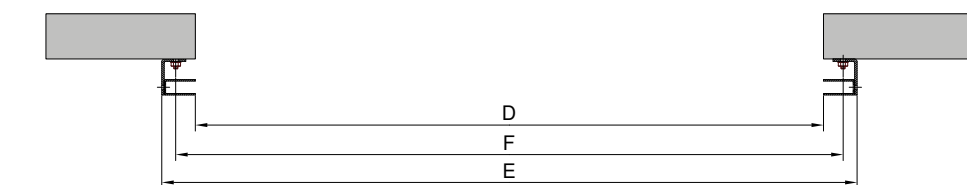
Thermal Performance  
Infill piece only 0.553 W/m<sup>2</sup>K



Lath Section



Bottom Slat



Plan Section B-B



THIS DRAWING IS THE PROPERTY OF SECURITY DIRECT

Please note that these drawings and information may not contain the full details required for installation and thus to be use in conjunction with installation instructions. SWS UK reserves the right to modify the design and change specifications without notice.

TITLE: Industrial Shutter General Arrangement

SCALE: N.T.S DRAWN BY: RH