

Product Specification Sheet

FC2

**Fire Curtain with up to 4-hour Fire Resistance
Approval to British and European Standards**

KEY SPECIFICATIONS

Headbox	1.2mm galvanized mild steel with 2mm end caps
Rollers	76mm coated mild steel tube
Motors	24V DC
Fabric	C41000WK
Bottom Bar	Twin angle mild steel
Side Guides	100 x 50 rolled steel
Electronics	See separate spec sheet



STANDARDS

Tested and approved to British and European Standards.

- BS EN 1634 - Part 1 : Fire resistance test for door and shutter assemblies and openable windows.

DESIGNATIONS & SIZE LIMITATIONS

Model	Max Width (m)	Max Drop (m)	Fire Resistance (mins)		Smoke Seal Option Available	Product Standard	Certificate / Reports
			Integrity (E)	Irradiance (W)			
Single Roller	5.5*	8.0	60	30	Yes**	BSEN 1634-1	Certifire CF5433
		7.0	120	30			
		6.0	180	30			
		5.0	240	30			
	2.4	2.7	240	60			
Multiple Roller	Unlimited	6.0	240	-	No	-	

*Maximum width also dependent on curtain drop length. Multiple rollers may be required.

**Maximum width 5m, see FC2-S Specification Sheet.



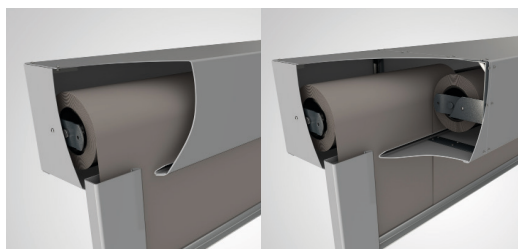
HEADBOX SIZES

The size of the curtain roller housing (headbox), depends on the curtain drop and width. The tables below give details of the full range of standard headbox sizes for the FC2 fire curtains. Contact us for oversized systems.

Type A: The standard headbox for use with curtain widths up to 5.5m.

Type B: Headbox for use with limited installation height for headbox.

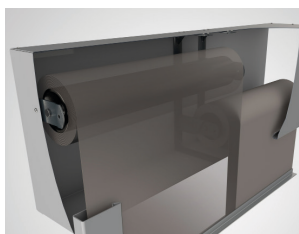
Type C: The standard headbox for use with curtain unlimited widths.



Type A

Type B

Curtain Drop	Single Roller Headbox (Max Width 5.5m)	Side by Side Headbox
Up to 1.5m	150x150mm	250x150mm
1.501m - 3.0m	180x180mm	310x180mm
3.001m - 6.0m	210x210mm	350x210mm
6.001m - 8.0m	230x230mm	



Type C

Curtain Drop	Over Under Headbox
Up to 2.5m	180x310mm
2.501m - 6.0m	210x350mm

WARRANTY

A manufacturer's warranty is provided for a period of one year. Exclusions may apply if any element is sublet to an unauthorised party.