

SLIMLINE Product Guide



SLIMLINE GLAZED





CONTENTS

| | |
|----|--------------------------|
| 4 | Slimline Security |
| 6 | Janisol |
| 8 | Janisol 2 |
| 10 | Janisol Arte 15 |
| 12 | Janisol Arte 2.0 |
| 14 | Janisol C4 |
| 16 | Jansen Economy |
| 18 | Janisol Anti-finger-trap |
| 20 | Janisol Viss |
| 22 | Janisol Viss Fire |



SCHÜCO

SLIMLINE
ARCHITECTURAL
PRODUCTS

Slimline Security

Combining our sleek glazed features with the strength and durability of the Jansen steel profiles, we have created a security rated range for our prestigious glazed product line.

Perfect for communal entrances, apartment lobbies, commercial premises and buildings in areas vulnerable to vandalism and break-ins. Our Slimline Security range offers an elegant, fully glazed, design with industry recognized and sought after security ratings.



Product name – SLS 1**Security rating**

- Certified SBD under LPS 2081 Issue 1 rating B

Configuration

- Single doors inward and outward opening

Systems

- Janisol thermally broken
- Economy 60 non thermally broken

Maximum Sizes

- Single door 1.45m w x 2.5m single
- Maximum f/s side panel 1370mm (1 each side)
- Maximum over panel 1400mm (full width)

Operation

- Designed for Access control access suitable for communal doors, internal offices and lobby doors.

Hardware

- 2 no Assa Abloy ES 8000 V lock
- Geze Ts5000 or concealed closer
- Pull/push handles

Infill options

- DGU - Steel panels

Product name – SLS 2**Security rating**

- Certified SBD under LPS 1175 SR2

Configuration

- Single and double doors inward and outward opening

Systems

- Janisol thermally broken
- Economy 60 non thermally broken

Maximum Sizes

- Single door 1.25m w x 2.5m H
- Double door 2.5m w x 2.5m H
- Maximum f/s side panel 1370mm (1 each side)
- Maximum over panel 1400mm (full width)

Operation

- Designed for Access control access suitable for communal doors, internal offices and lobby doors.

Hardware

- Single door 2 no Assa Abloy ES 8000 V lock
- Double door 3 no Assa Abloy ES 8000 V lock
- Geze Ts5000 or concealed closer
- Pull/push handles
- Cable loops (double only)
- Manual flush bolts (double only)

Infill options

- DGU/steel panels



Janisol

Thermally insulated steel profile system for multi-functional door constructions.

The steel profile system enables a wide variety of constructions for aesthetically and structurally demanding multi-functional single and double-leaf steel doors in outdoor areas – perfect for use in heavily frequented public buildings. The stainless steel profile system option is conceived for elegant thermally insulated door constructions with the highest requirements in functionality, security and design – ideally suited for use in coastal and industrial zones and in care-related and hygiene-critical areas. The compatibility of Janisol steel door systems guarantees visually uniform solutions even when there are a number of different security requirements: non-insulated Jansen Economy doors for indoor use and smoke protection as well as Janisol 2, Janisol C4 fire protection systems can be combined.



Materials/surface finishes

- Uncoated or strip-galvanised steel, suitable for powder coating or stove-enamelling
- Stainless steel 1.4401 (AISI 316) or 1.4301 (AISI 304) (smoothed on request)

Element types

- Single and double steel doors, with or without side panels and transom windows, inward and outward-opening
- Single and double stainless steel doors, with or without side panels and transom windows, inward and outward-opening
- Sheet metal clad steel doors with or without vision panels
- Anti-finger-trap door

Equipment

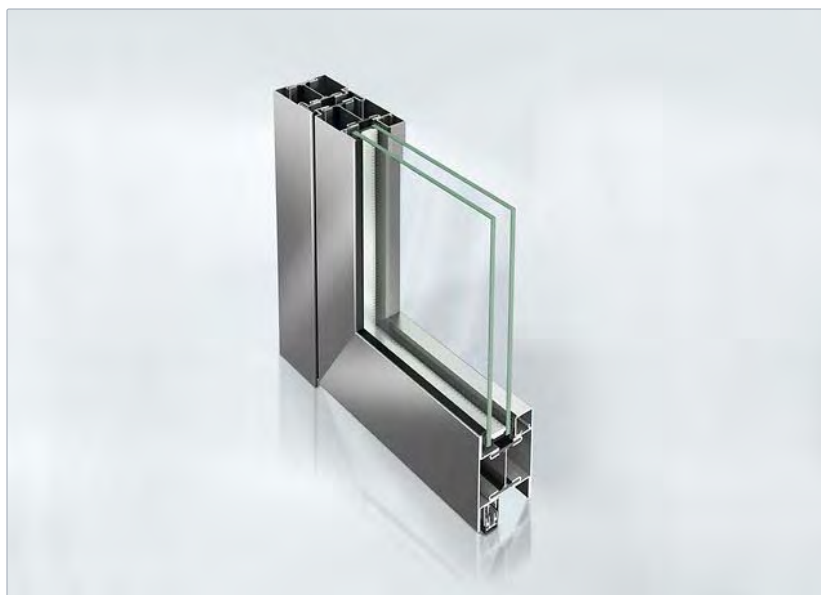
- Steel and stainless steel hinges for welding or screw-fitting
- Integrated door closers
- Designer glazing beads
- Emergency locks and panic push-bars

Special technical features

- Installation depth 60 mm
- Special geometries (semi-circular tops)
- Structural glazing leaf as special solution
- Pivot door made of steel or stainless steel as special solution
- Janisol anti-finger-trap door

Test certificates

- CE marking in accordance with product standard EN 14351-1
- Tightness against heavy rain up to class 4A
- Air permeability up to class 4
- Resistance to wind load up to class C4/B4
- Airborne sound insulation up to R_w 45 dB
- Coefficient of thermal transmittance $UD > 1.5 \text{ W/m}^2\text{K}$
- Shear bonding in accordance with EN 14024
- Durability in accordance with EN 12400 class 8
- Burglar resistance in accordance with EN 1627 up to RC (WK) 3
- Bullet resistance FB 4-6
- TRAV
- Emergency exit door in accordance with EN 1125 / EN 179



Janisol 2

All-round fire protection system with multiple applications.

As an all-round fire protection system for door and fixed glazing constructions, Janisol 2 El30 (T30/F30) combines the highest in building safety standards with optimal design freedom. The narrow and highly stable steep profiles of the system enable solutions for special applications which meet all the requirements of demanding architecture, such as stainless steel, butt joint glazing, anti-finger-trap doors and clad doors with transparent toplights and sidelights.

The unlatched, non-rebated option is fully tested and approved, meeting the market demands for extremely slender visible profile widths, the overall transparent look while allowing for fire resistance of 30 minutes integrity and insulation. This profile, available with a wide choice of fittings and accessories for flush single- and double-leaved glazed fire resistant doors. The appeal of the system also resides in its outstanding durability and robustness.



Materials / surface

- Uncoated or strip-galvanised steel, suitable for powder coating or stove-enamelling
- Stainless steel 1.4301, uncoated or polished

Element types

- Single and double doors, with or without side panels and transom windows
- Partition walls with free glass edges
- Sheet metal clad doors with or without cut-outs for glazing

Equipment

- Steel and stainless steel hinges for welding or screw-fitting
- Integrated door closers
- Multipoint locks (motorised also available)
- Designer glazing beads
- Emergency locks and panic push-bars

Special technical features

- Connection to solid wall or lightweight wall construction
- Central glazed panel
- Dry glazing and glazing with putty
- Door height up to 2.5 m with single-latch lock
- Door height up to 3.0 m with single-latch lock and bi-metal lug or single-latch lock with top retracting bolt

Test certificates

- Fire resistance class EI30 tested in accordance with EN 1634-1 and DIN 4102-5
- Smoke control in accordance with DIN 18095
- Smoke control tested in accordance with EN 1634-3
- Durability (C5) tested in accordance with EN 1191
- Emergency exit door in accordance with EN 1125 / EN 179
- Burglar resistance RC (WK) 1 to 3
- Airborne sound insulation up to R_w 43 dB



Jansen Arte 15

Versatile door design for sophisticated steel interiors.

Interior design with high flexibility: With glazed, flush-fitted or partially flush-fitted designs, Jansen Art'15 doors offer a high degree of personalisation in design options. Depending on requirements, the highly stable system can optionally be flush-fitted, face-fitted or rebated.

Minimal profile face widths ensure maximum transparency and light penetration in the rooms. The slimline, non-insulated door and partition wall system made from steel provides architects and specifiers with increased creative freedom for sophisticated interiors



Benefits

- Minimal face widths
- Transparent room divider in the interior
- Three design options

Field

- renovation and new construction

Available as:

- Window-door
- Projected top-hung window

Materials / surface finish

- Bright
- Strip galvanised steel

Window types / opening types

- Interior doors, single and double-leaf, with sidelight and toplight
- Interior fixed glazing

Fittings

- Wet glazing or putty
- Locks and handles for the window doors
- Floor seals
- Curved units
- Glass thicknesses of 6 to 24 mm
- Max. weight 100 kg

Special technical features

- Basic depth of 50 mm

Very narrow face widths

- Fixed glazing 25 mm
- Door leaf 43 mm
- Door meeting stile design 66 mm
- Easy to fabricate
- Door leaf sizes up to 900 x 2400 mm

Test certificate

- Airborne sound insulation up to Rw 43 dB



Jansen Arte 2.0

Slimline steel windows with attractive material options – for stylish renovations and modern buildings.

The Janisol Arte 2.0 steel profile system has been specially conceived for the renovation of industrial and loft glazing, in accordance with the guidelines for listed buildings and to allow the value of the property to be retained. The expanded range of materials with stainless steel and Corten steel profile designs ensures added design freedom.

A wide spectrum of opening types allows the almost perfect reconstruction of historical inward or outward-opening side-hung, double-vent, bottom-hung, top-hung, projected top-hung, sliding or pivot windows – with excellent thermal insulation and stability.

Thanks to narrow profile face widths with the highest possible proportion of glass, attractive slimline window solutions can be implemented – including for use in modern residential buildings.

Extensive system tests, which take into account all the requirements in terms of structural properties, building physics, safety and security, guarantee reliable planning, fabrication and installation.



Materials / surface finish

- Strip galvanised steel
- Stainless steel 1.4401
- Corten

Window types / opening types

- Side-hung window and window with meeting stile, single and double-vent, inward and outward-opening
- Inward-opening bottom-hung window
- Top-hung and projected top-hung window, outward-opening
- Horizontal pivot window
- Vertical pivot window
- Fixed glazing

Fittings

- Multi-point locking
- Surface-mounted fitting version
- Electric drive

Special technical features

- Basic depth of 60 mm

Very narrow face widths:

- Fixed glazing 25 mm
- Window vent 20 mm
- Window meeting stile design 60 mm
- Easy to fabricate
- Window sizes up to 1000 x 2400 mm
- Glass thicknesses of 20 to 47 mm
- Max. weight 150 kg

Test certificates

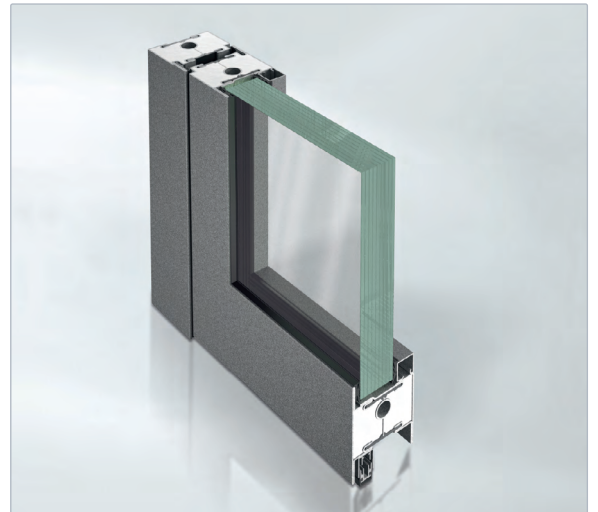
- CE marking in accordance with product standard EN 14351-1
- Resistance to wind load C5 (2000 Pa)
- Watertightness up to class 9A (600 Pa)
- Sound reduction up to 45 dB
- Thermal transmittance of U_f from 1.9 W/m²K
- Air permeability class 4 (600 Pa)
- Load-bearing capacity of safety devices met
- Mechanical strength class 4
- Dangerous substances in accordance with ISO 16000 met
- Durability class 4 (50,000 cycles)
- Impact resistance class 4
- Prefabricated glazing suitable for safety barrier loading DIN 18008-4 met
- Burglar resistance tested in accordance with EN 1627 up to RC2



Janisol C4

Versatile fire protection system for doors and fixed glazing.

As a door and fixed glazing system with a basic depth of 70 mm, the Janisol C4 El60 & El90 combines the high security features of a steel fire protection system with a sophisticated, elegant design. The pioneering fire doors therefore meet all the security and aesthetic requirements of modern building planning. Standardised cable channels provided in the profile ensure easy and quick installation. The unlatched, non-rebated steel fire door is fully tested and approved, meeting the market demands for extremely slender visible profile widths, the overall transparent look while allowing for fire resistance of 60 minutes integrity and insulation. This profile, available with a wide choice of fittings and accessories for flush single- and double-leaved glazed fire resistant doors. The appeal of the system also resides in its outstanding durability and robustness.



Material / surface finish

- Uncoated steel or strip-galvanised steel, up to EI90 suitable for powder coating or stove-enamelling
- Stainless steel 1.4301, uncoated or polished

Element types

- Single and double doors, with or without side panels and transom windows
- Partition walls

Equipment

- Steel and stainless steel hinges for welding or screw-fit
- Integrated door closers for EI60
- Multipoint locks (motorised also available)
- Designer glazing beads
- Emergency locks and panic push-bars
- Special technical features
- Connection to solid wall or lightweight partition wall
- Central glazed panel
- Dry glazing and glazing with putty
- Door heights up to 2.50 m with single-latch lock

Test certificates

- Fire resistance classes EI60 and EI90 tested in accordance with EN 1634-1 and DIN 4102-5
- Fire wall – special design EI120
- Smoke control in accordance with DIN 18095
- Smoke control tested in accordance with EN 1634-3
- Durability (C5) tested in accordance with EN 1191
- Emergency exit door in accordance with EN 1125 / EN 179

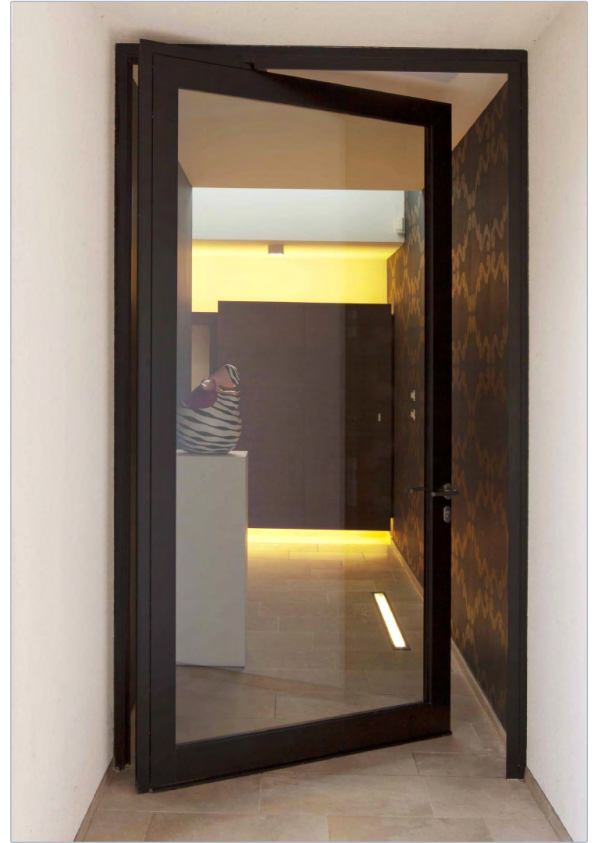


Jansen Economy 60

Flexible G60/E60 system solution for fire-resistant glazing and fire protection barriers in interiors.

The Jansen Economy E60 (G60) steel profile system in 50 mm and 60 mm basic depths impresses with its wide range of flexible, highly transparent solutions for interiors: project-specific vertical fire-resistant glazing in accordance with DIN and EN standards can be implemented just as elegantly as slimline fire protection barriers in accordance with EN 1634-1.

The unlatched, non-rebated steel fire door is fully tested and approved, meeting the market demands for extremely slender visible profile widths, the overall transparent look while allowing for fire resistance of up to 60 minutes integrity only. This profile, available with a wide choice of fittings and accessories for flush single- and double-leaved glazed fire resistant doors. The appeal of the system also resides in its outstanding durability and robustness.



Materials / surface finish

- Uncoated steel or strip-galvanised steel, suitable for powder coating or stove-enamelling

Element types

- Single and double doors, with or without side panels and transom windows
- Sheet metal clad doors with or without cut-outs for glazing
- Anti-finger-trap doors
- Pivot door and folding wall available as a special design

Equipment

- Steel hinges are available for welding or screw fixing
- Integrated door closers, concealed hinges and follower hooks
- Multipoint locks (motorised also available)
- Designer glazing beads
- Emergency locks and panic push-bars

Special technical features

- Installation depth 60 mm
- Special geometries (semi-circular tops)
- Also available as anti-finger-trap door
- Also available with fire protection (Fire protection doors Jansen Economy 60) or smoke protection (Smoke control doors Jansen Economy 60 RS).

Test certificates

- CE marking in accordance with product standard EN 14351-1
 - Tightness against heavy rain up to class 5A
 - Air permeability up to class 4
 - Resistance to wind load up to class C5
 - Sound insulation up to Rw 45 dB
- Burglar resistance in accordance with EN 1627 up to RC (WK) 3
- Bullet resistance FB 4-6 S/NS
- Emergency exit door in accordance with EN 1125 / EN 179
- Mechanical strength class 4
- Conditions for approval fulfilled
- Conditions for supporting safety devices fulfilled

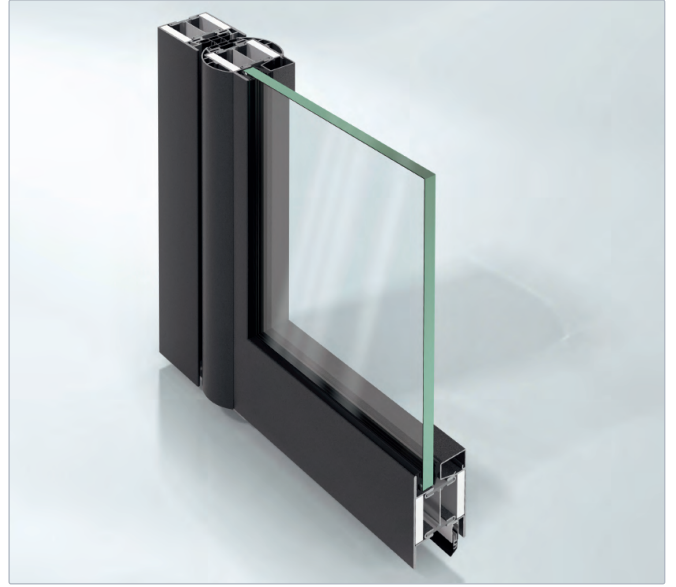


Janisol anti-finger-trap

The rounded half shells minimise the risk of injury with the secondary closing edge.

This allows crush and shear points to be avoided according to DIN 18650. Thanks to low-maintenance, high-performance strip hinges the Janisol anti-finger-trap doors are particularly well-suited to buildings with regular public access as well as shopping centres, schools or hospitals.

The Janisol anti-finger-trap doors fulfil the EN 14351-1 product standard for external doors and are CE certified. The anti-finger-trap doors are compatible with the Janisol profile range. Furthermore, integral door closers and automatic revolving door drives can be fitted.



Product Details

- No crush and shear points according to DIN 18650 on the secondary closing edge
- High-performance and low-maintenance strip hinges at bottom and top
- Particularly well-suited to doors with regular public access (schools, hospitals, shopping centres etc.)
- CE-certified, fulfils the product standard according to EN 14351-1
- Easy assembly and fitting
- Simple and cost-effective thanks to the use of Janisol profiles from the standard range



Jansen Viss

Steel add-on construction for innovative solutions with maximum process reliability during fabrication.

With the VISS system, Jansen offers a highly thermally insulated facade construction with a Passivhaus certificate for any application both in new buildings and refurbishments. The components from the modular system are selected to suit the structural requirements, size of panels and/or infill element thicknesses in order to achieve the best solution in terms of structure and cost. Individual architectural accents can be created through the outer covering of the load-bearing structure by means of aluminium cover cap profiles in a range of basic depths and contours. Cover cap profiles in stainless quality complete the wide range of design options for the façade. The slim face widths of the steel system ensure maximum light penetration. The intersections of the skylight construction and the vertical façade are achieved with visual elegance.



Materials / surface

- Uncoated steel or hot-dipped galvanised strip steel, suitable for powder-coating or stove enamelling
- Cover profiles in aluminium and stainless steel

Support structures

- VISS system profiles Designer profiles (Linea, Delta, non-standard profiles)

Construction types

- Mullion-mullion-transom construction
- Mullion-transom-mullion construction
- Welded and/or push-fit construction
- Segmental glazing, concave and convex

Equipment

- Highly insulated; with Passivhaus certificate
- Structural glazing
- Easy fixing of solar screening devices
- Windows and doors can be fitted

Special technical features

- Face width 50 and 60 mm
- Thickness of infill elements, 6 to 70 mm
- Construction depths 50 to 280 mm

Test certificates

- CE marking in accordance with product standard EN 13830
 - Coefficient of thermal transmittance $U_f > 0.65 \text{ W/m}^2\text{K}$
 - Airborne sound insulation $R_w 47 \text{ db}$
 - Tightness against heavy rain class RE1200
 - Air permeability class AE
 - Resistance to wind load class 2 kN/m²
 - Impact resistance class E5/I5
 - Burglar resistance RC 2 to 3
 - Bullet resistance FB4/NS
- Clamp connection AbZ Z-14.4-459
- Mullion-transom connection AbZ Z-14.4-467
- TRAV
- Avis Technique France
- CWCT test



Jansen Viss Fire

Flexible fire-resistant façade - maximum security with an attractive design.

VISS Fire is the steel profile system for all standard fire-resistance classes, which also allows attractive façades to be created flexibly without compromising on security or design. The fire protection system can be freely combined with standard VISS façades – with a consistent, uniform look thanks to identical façade elevations.

Slimline face widths with large areas of glass provide maximum light penetration and the highest level of transparency.

The system is designed for vertical façades in all tested fire resistance classes for internal and external use (E30/60/90, EI30/60/90), and approved in combination with Janisol 2 fire doors for internal use.



Materials/surface finishes

- Uncoated steel or hot-galvanised strip steel, suitable for powder-coating or stove enamelling

Support structures

- VISS system profile
- Designer profiles (Linea)

Construction types

- Mullion-mullion-transom construction
- Mullion-transom-mullion construction
- Welded and/or push-fit construction
- Segmental glazing

Equipment

- Doors with curtain walls

Special technical features

- Face width 50 mm
- Installation depths 50 - 140 mm
- Thickness of infill elements, 5 - 70 mm

Test certificates

- Tested in accordance with EN 1364
- Fire protection classes E30 / E60
- Fire protection classes EI30 / EI60 / EI90
- TRAV
- Product standard curtain wall in accordance with EN 13830
- Clamp connection AbZ Z-14.4-465
- Mullion-transom connection AbZ Z-14.4-467
- Swiss fire protection approvals



